

Order numbers with the code „A+“ can usually be supplied ex-works within three working days.
Order numbers with the code „A“ can usually be supplied ex-works within five working days.



THURMETALL

Customised as standard

THUR*Express*

Our offers with the fastest delivery time!



QUALITY WHICH
WILL STAND UP
TO ANY TEST



Certified to
ISO 9001, 14001
and OHSAS 18001



pCon
CATALOG

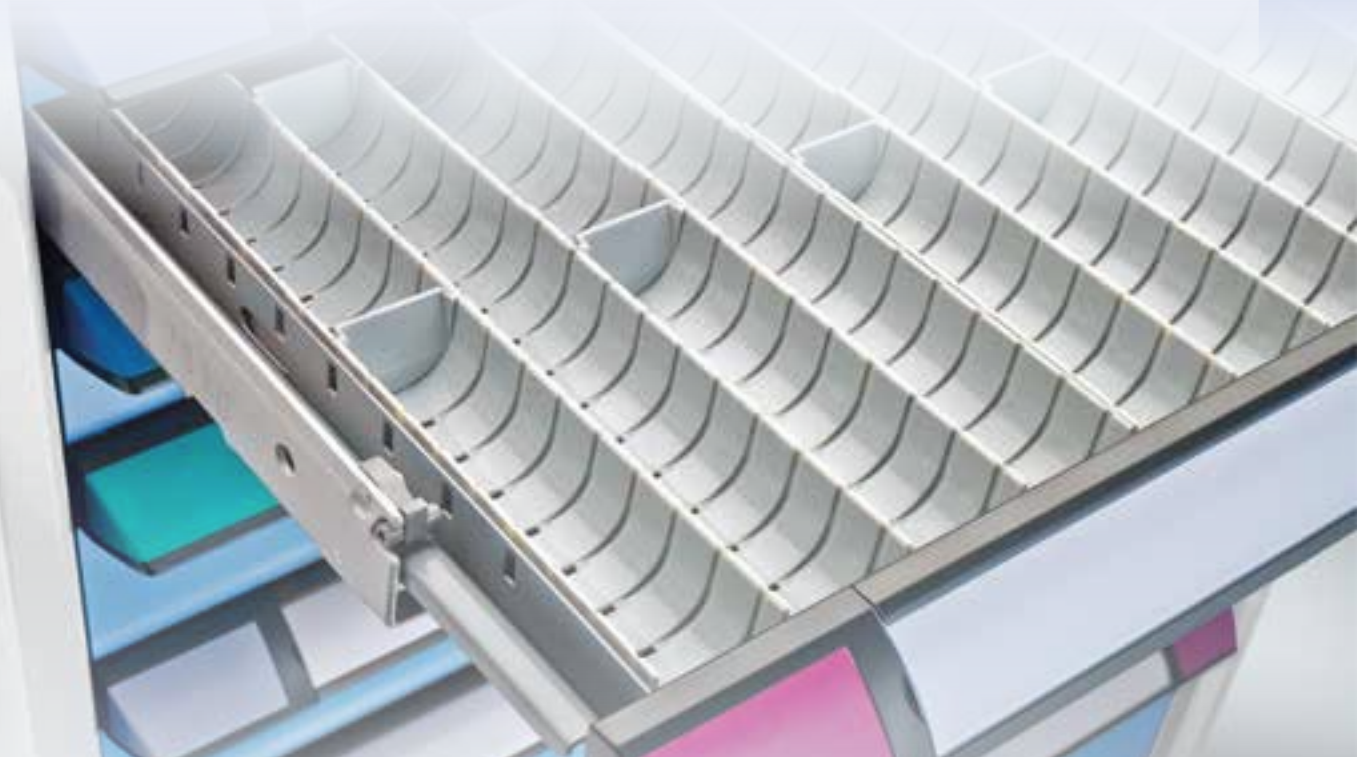


swissmade

Absolute precision
in manufacturing and production

Thur Metall Classic

Unmistakable and unique



Colour selection



pCon
CATALOG

- Housing/frames**
pigeon blue, NCS S 4040-R70 B
- Fronts/doors**
light blue, NCS S 1060-R80 B

Features



Classic Thur Metall design

Instant visual identification thanks to coloured corners



Top quality

Housing with a load-bearing capacity of up to 4 tonnes (distributed load)



Available at short notice

Many items can be supplied ex-works within five to eight working days



Drawer cabinet

Height **1000** × width **805** × depth **695** mm

Colour

NCS S 4040-R70 B

NCS S 1060-R80 B

Art. no.

A+ 52.163.000

Specifications

- High-quality steel plate construction
- Total load capacity 4000 kg with an evenly distributed load
- 7 drawers (front heights 2 × 75 mm / 2 × 100 mm / 1 × 150 mm / 2 × 200 mm), 75 kg load capacity, full extension runner
- Usable area per drawer = 700 × 600 mm = 0.42 m²
- Drawer handle with large labelling area
- «Key Lock» locking system with single-drawer blocking system, including two keys

Partition material

Product

Set for drawer cabinet

Art. no.

A 55.861.000

1 × FH 75 mm



1 × foam insert

1 × FH 75 mm



4 × lengthways partitioning
11 × horizontal partitioning
incl. inscription holder

2 × FH 100 mm



8 × lengthways partitioning
22 × horizontal partitioning
incl. inscription holder

1 × FH 150 mm



2 × lengthways partitioning
3 × horizontal partitioning
incl. inscription holder

2 × FH 200 mm



without partition
material



Drawer cabinet

Height **1000** × width **805** × depth **695** mm

Colour

NCS S 4040-R70 B

NCS S 1060-R80 B

Art. no.

A 52.162.000

Specifications

- High-quality steel plate construction
- Total load capacity 4000 kg with an evenly distributed load
- 9 drawers (front height 100 mm), 75 kg load capacity, full extension runner
- Usable area per drawer = 700 × 600 mm = 0.42 m²
- Drawer handle with large labelling area
- „Key Lock“ locking system with single-drawer blocking system, including two keys

Partition material

Product

Set for drawer cabinet

Art. no.

A 55.863.000

9 × FH 100 mm



45 × lengthways partitioning
54 × horizontal partitioning
incl. inscription holder



Drawer cabinet

Height **1000** × width **1005** × depth **695** mm

Colour

NCS S 4040-R70 B

NCS S 1060-R80 B

Art. no.

A 86.504.501

Specifications

- High-quality steel plate construction
- Total load capacity 4000 kg with an evenly distributed load
- 6 drawers (front heights 2 × 100 mm / 2 × 150 mm / 2 × 200 mm), 75 kg load capacity, full extension runner
- Usable area per drawer = 700 × 600 mm = 0.42 m²
- Drawer handle with large labelling area
- „Key Lock“ locking system with single-drawer blocking system, including two keys

Partition material

Product

Set for drawer cabinet

Art. no.

A 81.226.000

2 × FH 100 mm



2 × foam insert

2 × FH 150 mm



12 × lengthways partitioning
28 × horizontal partitioning
incl. inscription holder

2 × FH 200 mm



4 × lengthways partitioning
6 × horizontal partitioning
incl. inscription holder



Rollboy

Height **992** × width **605** × depth **695** mm

Colour

NCS S 4040-R70 B

NCS S 1060-R80 B

Art. no.

A 52.240.000

Specifications

- High-quality steel plate construction
- Total load capacity 400 kg with an evenly distributed load
- 5 drawers (front heights 2 × 100 mm / 2 × 150 mm / 1 × 200 mm), 75 kg load capacity, full extension runner
- Usable area per drawer = 500 × 600 mm = 0.3 m²
- Drawer handle with large labelling area
- Locking system with single-drawer blocking system, including two keys
- Drawer securing system prevents unintentional opening of the drawers
- 1 raised edge with ribbed mat and push bar (black)
- Set of castors in solid rubber consisting of 2 fixed and 2 swivel castors with locking brakes, ø 100 mm

Partition material

Product

Set for drawer cabinet

Art. no.

A 55.867.000

2 × FH 100 mm



8 × lengthways partitioning
20 × horizontal partitioning
incl. inscription holder

2 × FH 150 mm



4 × lengthways partitioning
6 × horizontal partitioning
incl. inscription holder

1 × FH 200 mm



without partition
material

Standard workbench

Height **840** × depth **700** mm

Colour	Width	Art. no.
NCS S 4040-R70 B	1500 mm	A+ 52.253.000
	2000 mm	A+ 52.250.000

Specifications

- Workbench legs made from square tubular steel 50/50 mm. Can be retrofitted with height adjustment and mounting brackets for screwing to the floor.
- Crossbar for optimum stability
- Workbench top: multiplex 40 mm
- Total load capacity: 600 kg (W = 1500 mm) and 360 kg (W = 2000 mm) with an evenly distributed load



Standard workbench 1 drawer

Height **840** × depth **700** mm

Colour	Width	Art. no.
NCS S 4040-R70 B	1500 mm	A 52.249.000
NCS S 1060-R80 B	2000 mm	A 52.248.000

Specifications

- Workbench legs made from square tubular steel 50/50 mm. Can be retrofitted with height adjustment and mounting brackets for screwing to the floor.
- Crossbar for optimum stability
- Workbench top: multiplex 40 mm
- Total load capacity: 600 kg (W = 1500) and 360 kg (W = 2000) with an evenly distributed load
- 1 drawer (front height 150 mm), 75 kg load capacity, full extension runner
- Usable area per drawer = 500 × 600 mm = 0.30 m²
- Drawer handle with large labelling area



Standard workbench

3 drawers

Height **840** × depth **700** mm

Colour		Width	Art.no.
NCS S 4040-R70 B	NCS S 1060-R80 B	1500 mm	A 65.800.000
		2000 mm	A 65.730.000

Specifications

- Workbench legs made from square tubular steel 50/50 mm. Can be retrofitted with height adjustment and mounting brackets for screwing to the floor.
- Crossbar for optimum stability
- Workbench top: multiplex 40 mm
- Total load capacity: 600 kg (W = 1500 mm) and 360 kg (W = 2000 mm) with an evenly distributed load
- 3 drawers (front heights 2 × 75 mm / 1 × 150 mm), 75 kg load capacity, full extension runner
- Usable area per drawer = 500 × 600 mm = 0.30 m²
- Drawer handle with large labelling area
- „Key Lock“ locking system with single-drawer blocking system, including two keys



Standard workbench

5 drawers

Height **840** × depth **700** mm

Colour		Width	Art.no.
NCS S 4040-R70 B	NCS S 1060-R80 B	1500 mm	A 52.246.000
		2000 mm	A 52.245.000

Specifications

- Workbench top: multiplex 40 mm
- Total load capacity: 1500 kg (W = 1500 mm) and 800 kg (W = 2000 mm) with an evenly distributed load
- 5 drawers (front heights 2 × 100 mm / 2 × 150 mm / 1 × 200 mm), 75 kg load capacity, full extension runner
- Usable area per drawer = 500 × 600 mm = 0.30 m²
- Drawer handle with large labelling area
- „Key Lock“ locking system with single-drawer blocking system, including two keys



Partition material

Product	Art.no.
Set for drawer cabinet	A 55.867.000

2 × FH 100 mm



8 × lengthways partitioning
20 × horizontal partitioning
incl. inscription holder

2 × FH 150 mm



4 × lengthways partitioning
6 × horizontal partitioning
incl. inscription holder

1 × FH 200 mm



without partition
material



Compact workbench

Height **845** × width **1500** × depth **700** mm

Colour

NCS S 4040-R70 B

NCS S 1060-R80 B

Art.no.

A 64.995.501

Specifications

- Workbench frame made from steel profile 40×40 mm
- Self-supporting with height compensation
- Capacity approx. 1000 kg with an evenly distributed load
- All legs can be retrofitted with height adjustment (800–1100 mm in 50 mm increments) and mounting brackets for screwing to the floor
- Workbench top: multiplex 40 mm
- 3 drawers (front heights 2 × 150 mm / 1 × 200 mm), without drawer securing system, 75 kg load capacity, full extension runner
- Usable area per drawer = 500 × 600 mm = 0.30 m²
- Drawer handle with large labelling area
- 1 door (front height 500 mm)
- 1 shelf (galvanised, load capacity 30 kg)
- Central lock including Ronis cylinder with two keys



Partition material

Product

Art.no.

Set for compact workbench

A 82.651.000

2 × FH 150 mm



4 × lengthways partitioning
12 × horizontal partitioning
incl. inscription holder

1 × FH 200 mm



without partition
material



Compact workbench

Height **845** × width **2000** × depth **700** mm

Colour

NCS S 4040-R70 B

NCS S 1060-R80 B

Art.no.

A 64.606.000

Specifications

- Workbench frame made from steel profile 40×40 mm
- Self-supporting with height compensation
- Capacity approx. 1000 kg with an evenly distributed load
- All legs can be retrofitted with height adjustment (800 – 1100 mm in 50 mm increments) and mounting brackets for screwing to the floor
- Workbench top: multiplex 40 mm
- 3 drawers (front heights 2 × 150 mm / 1 × 200 mm), without drawer securing system, 75 kg load capacity, full extension runner
- Usable area per drawer = 500 × 600 mm = 0.30 m²
- Drawer handle with large labelling area
- 1 door (front height 500 mm)
- 2 shelves (galvanised, load capacity 30 kg)
- Central lock including Ronis cylinder with two keys (two locks simultaneously lockable)

Partition material

Product

Art.no.

Set for compact workbench

A 82.651.000

2 × FH 150 mm



4 × lengthways partitioning
12 × horizontal partitioning
incl. inscription holder

1 × FH 200 mm



without partition
material



Compact workbench

Height **845** × width **1500** × depth **700** mm

Colour

NCS S 4040-R70 B

NCS S 1060-R80 B

Art.no.

A 64.799.000

Specifications

- Workbench frame made from steel profile 40 × 40 mm
- Self-supporting with height compensation
- Capacity approx. 1000 kg with an evenly distributed load
- All legs can be retrofitted with height adjustment (800–1100 mm in 50 mm increments) and mounting brackets for screwing to the floor
- Workbench top: multiplex 40 mm
- 2 drawers (front heights 2 × 150 mm), without drawer securing system, 75 kg load capacity, full extension runner
- Usable area per drawer = 500 × 600 mm = 0.30 m²
- Drawer handle with large labelling area
- 2 doors (front heights 350 mm)
- Central lock including Ronis cylinder with two keys



Partition material

Product

Art.no.

Set for compact workbench

A 82.651.000

2 × FH 150 mm



4 × lengthways partitioning
12 × horizontal partitioning
incl. inscription holder

1 × FH 200 mm



without partition
material



Compact workbench

Height **845** × width **2000** × depth **700** mm

Colour

NCS S 4040-R70 B

NCS S 1060-R80 B

Art.no.

A 64.798.000

Specifications

- Workbench frame made from steel profile 40 × 40 mm, centre section set back
- Self-supporting with height compensation
- Capacity approx. 1000 kg with an evenly distributed load
- All legs can be retrofitted with height adjustment (800 – 1100 mm in 50 mm increments) and mounting brackets for screwing to the floor
- Workbench top: multiplex 40 mm
- 2 drawers (front heights 2 × 150 mm), without drawer securing system, 75 kg load capacity, full extension runner
- Usable area per drawer = 500 × 600 mm = 0.30 m²
- Drawer handle with large labelling area
- 2 doors (front heights 350 mm)
- 1 shelf (galvanised, set back)
- Central lock including Ronis cylinder with two keys (two locks simultaneously lockable)

Partition material

Product

Art.no.

Set for compact workbench

A 82.651.000

2 × FH 150 mm



4 × lengthways partitioning
12 × horizontal partitioning
incl. inscription holder



Hinged door cabinet

Height **1950** × width **1000** × depth **500** mm

Colour

NCS S 4040-R70 B

Art. no.

NCS S 1060-R80 B

A+ 85.847.000

Specifications

- High-quality steel plate construction
- Full sheet steel doors with rotary handle security lock (incl. two keys)
- Housing load capacity 500 kg with an evenly distributed load
- 100 kg load capacity per shelf
- 4 shelves galvanised



For hinged-door cabinets with viewing window, refer to the ThurMetall main catalogue



Hinged door cabinet

Height **1950** × width **1250** × depth **580** mm

Colour

NCS S 4040-R70 B

Art. no.

NCS S 1060-R80 B

A+ 85.855.501

Specifications

- High-quality steel plate construction
- Full sheet steel doors with rotary handle security lock (incl. two keys)
- Housing load capacity 500 kg with an evenly distributed load
- 100 kg load capacity per shelf
- 4 shelves galvanised



The hinge bearing opens the doors by about 115 degrees and they can be flush with the cabinet housing.

Hinged door cabinet

Height **1000** × width **1000** × depth **500** mm

Colour

NCS S 4040-R70 B

NCS S 1060-R80 B

Art. no.

A 85.846.000

Specifications

- High-quality steel plate construction
- Full sheet steel doors with rotary handle security lock (incl. two keys)
- Housing load capacity 500 kg with an evenly distributed load
- 100 kg load capacity per shelf
- 2 shelves galvanised

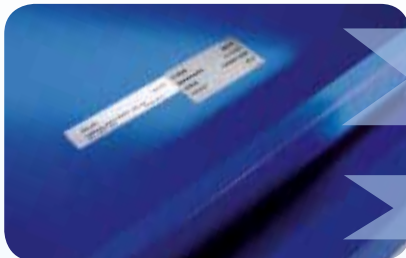


Rotary handle security lock with two keys.

Code lock is available on request.



Simple reordering procedure



All details about your product can be found with the customer order number.

In this case, the width/depth/height of the product can be read in mm.

Both labels are located on the base of the housing.

ArtikelNr	3046482
Artikelfreigabe	16.12.2013
Auftrag	741986/5000
Arbeitsplatz	90008

Item

Product number of the housing

654.941	Thur Metall AG
Gehäuse B805 T695 H1000 roh	
805 / 695 / 1000	16.12.2013

Production date



TM Online

The complete Thur Metall range offers countless solutions for your individual requirements. The complete catalogue, special offer catalogues, ThurScript and assembly instructions can be found here:

www.thurmetall.com



Heavy-duty cabinet

Height **1950** × width **1100** × depth **620** mm

Colour

NCS S 4040-R70 B

NCS S 1060-R80 B

Art. no.

A 82.852.000

Specifications

- High-quality steel plate construction
- Full sheet steel doors with rotary handle security lock (incl. two keys)
- Housing load capacity 1300 kg with an evenly distributed load
- 3 shelves galvanised, 200 kg load capacity
- 3 drawers (front heights 1 × 75 mm / 2 × 100 mm), 75 kg load capacity, full extension runner
- Usable area per drawer = 900 × 400 mm = 0.36 m²
- Drawer handle with large labelling area



With the fully extendable drawer runners, all available space is used, down to the last square centimetre.



Heavy-duty cabinet

Height **1950** × width **1100** × depth **620** mm

Colour

NCS S 4040-R70 B

NCS S 1060-R80 B

Art. no.

A 82.946.501

Specifications

- High-quality steel plate construction
- Full sheet steel doors with rotary handle security lock (incl. two keys)
- Housing load capacity 1300 kg with an evenly distributed load
- 1 shelf galvanised, 200 kg load capacity
- 1 extendible worktop multiplex, 75 kg load capacity
- 2 drawers (front heights 1 × 75 mm / 1 × 150 mm), 75 kg load capacity, full extension runner
- Usable area per drawer = 900 × 400 mm = 0.36 m²
- Drawer handle with large labelling area
- Inside of doors perforated (square perforations 10/10 mm)
- Rear panel ½ perforated (square perforations 10/10 mm)

NC roller shutter cabinet

Height **1950** × width **1005** × depth **690** mm

Specification	Art. no.
ISO / SK 30-40-50	A+ 51.123.000
VDI 20-25-30-40-50-60	A+ 51.121.000

Colour

NCS S 4040-R70 B

NCS S 4502-B



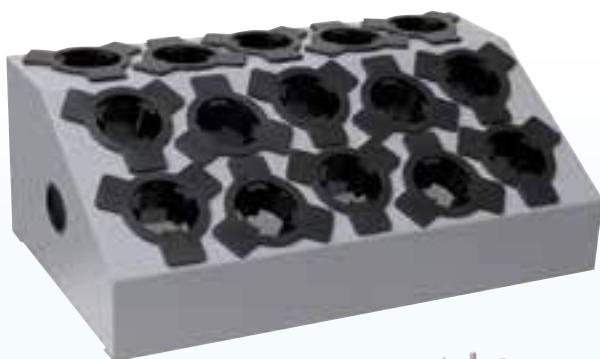
Specifications

- High-quality steel plate construction
- Housing load capacity 1300 kg with an evenly distributed load
- Vertically closing roller shutter, light grey RAL 7035 with handle and security lock
- 84 tool holders distributed on:
 - 2 shelves with 26 holders each
 - 1 shelf with 32 holders
- Both the height and the inclination of the shelves are adjustable



Tool holder system

made of high-quality plastic (ABS). The same base (basic support) contains variable inserts that can be adjusted within a type of tool holder (from SK 30 to SK 50, etc.). Basic support covers in black (standard) and red (according to the certification guidelines, there must be a clear distinction between new and used tools which cannot be «wiped off or removed»).



NC table stand

Height **212** × width **570** × depth **343** mm

Specification	Art. no.
ISO / SK 30-40-50	A 51.109.000
VDI 20-25-30-40-50-60	A 51.111.000

Colour

NCS S 4502-B

Tip

Simply combine an NC table stand with a rollboy (page 6) to form a mobile NC trolley with drawers.

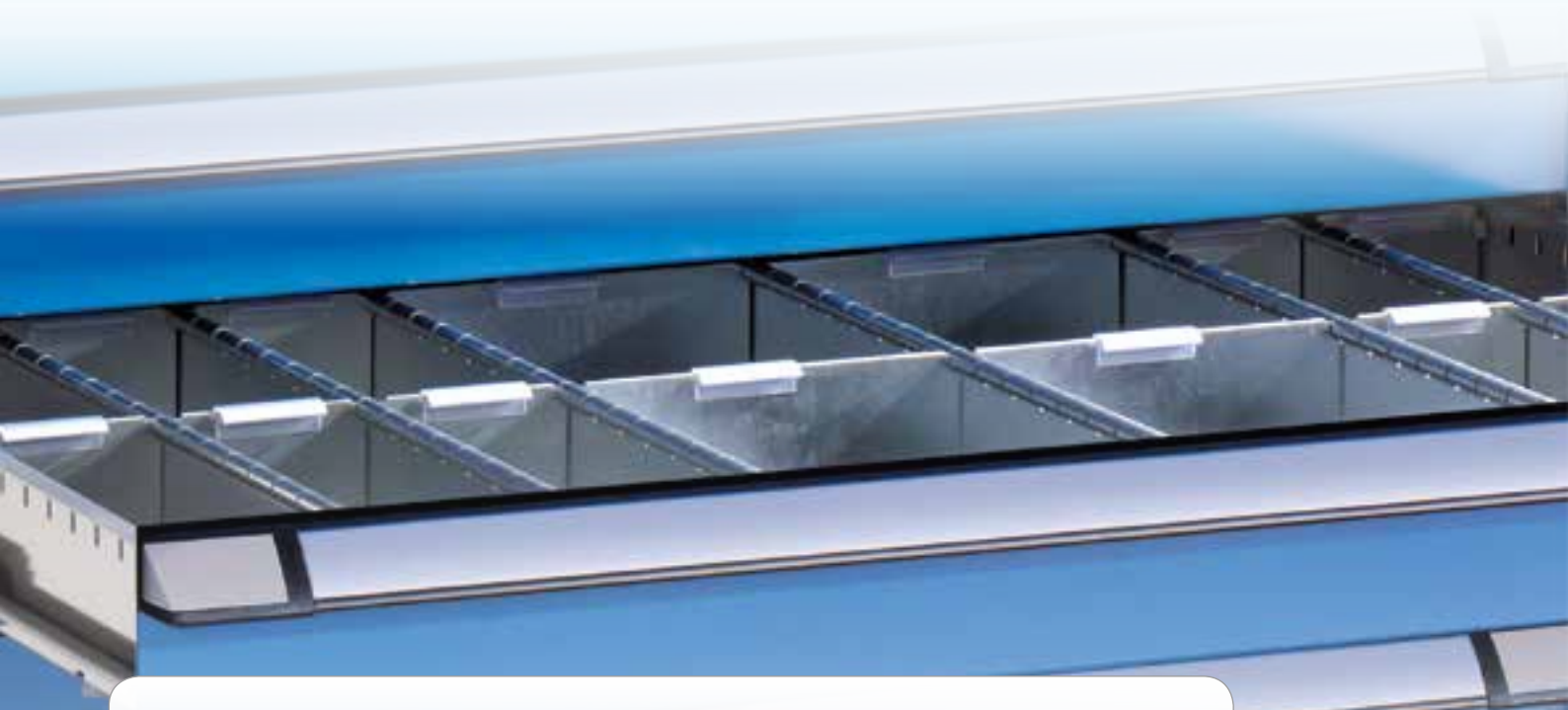


Specifications

- High-quality steel plate construction
- Inclined surface 90/212 × 70 × 343 mm (H × W × D)
- 15 tool holders

Thur Metall Starter

Compact and affordable



Appearance



Housings/frames
light grey, RAL 7035

Fronts/doors
light blue, RAL 5012



Single-colour corners (grey)



Drawer cabinets with full extension

Merkmale



Compact range
Guaranteed to meet a wide range of customer requirements



Uncompromising quality
5-year guarantee and ISO-certified production



Available at short notice
All items can be supplied ex-works within five working days



Drawer cabinet

Height **1000** × width **805** × depth **695** mm

Colour

RAL 7035

RAL 5012

Art.no.

A 53.472.514

Specifications

- High-quality steel plate construction
- Total load capacity 4000 kg with an evenly distributed load
- 6 drawers (front heights 2 × 100 mm / 2 × 150 mm / 2 × 200 mm), 75 kg load capacity, full extension runner
- Usable area per drawer = 700 × 600 mm = 0.42 m²
- „Key Lock“ locking system with single-drawer blocking system, incl. two keys

Partition material

Product

Set for drawer cabinet

Art.no.

A 53.437.000

2 × FH 100 mm



6 × lengthways partitioning
20 × horizontal partitioning

2 × FH 150 mm



6 × lengthways partitioning
16 × horizontal partitioning

2 × FH 200 mm



4 × lengthways partitioning
6 × horizontal partitioning



Drawer cabinet

Height **1000** × width **805** × depth **695** mm

Colour

RAL 7035

RAL 5012

Art.no.

A 81.557.000

Specifications

- High-quality steel plate construction
- Total load capacity 4000 kg with an evenly distributed load
- 7 drawers (front heights 2 × 75 mm / 2 × 100 mm, 1 × 150 mm / 2 × 200 mm), 75 kg load capacity, full extension runner
- Usable area per drawer = 700 × 600 mm = 0.42 m²
- „Key Lock“ locking system with single-drawer blocking system, including two keys

Partition material

Product

Set for drawer cabinet

Art.no.

A 17.589.000

1 × FH 75 mm



1 × foam insert

1 × FH 75 mm



4 × lengthways partitioning
11 × horizontal partitioning

2 × FH 100 mm



8 × lengthways partitioning
22 × horizontal partitioning

1 × FH 150 mm



2 × lengthways partitioning
3 × horizontal partitioning

2 × FH 200 mm



without partition material



Drawer cabinet

Height **1000** × width **805** × depth **695** mm

Colour	Art. no.
RAL 7035	A 81.569.000
RAL 5012	

Specifications

- High-quality steel plate construction
- Total load capacity 4000 kg with an evenly distributed load
- 9 drawers (front heights 2 × 75 mm / 6 × 100 mm / 1 × 150 mm), 75 kg load capacity, full extension runner
- Usable area per drawer = 700 × 600 mm = 0.42 m²
- „Key Lock“ locking system with single-drawer blocking system, including two keys

Partition material

Product	Art. no.
Set for drawer cabinet	A 17.590.000

1 × FH 75 mm



1 × foam insert

1 × FH 75 mm



4 × lengthways partitioning
11 × horizontal partitioning

3 × FH 100 mm



18 × lengthways partitioning
42 × horizontal partitioning

3 × FH 100 mm



12 × lengthways partitioning
33 × horizontal partitioning

1 × FH 150 mm



without partition material



Drawer cabinet

Height **1000** × width **1005** × depth **695** mm

Colour	Art. no.
RAL 7035	A 81.570.000
RAL 5012	

Specifications

- High-quality steel plate construction
- Total load capacity 4000 kg with an evenly distributed load
- 7 drawers (front heights 5 × 100 mm / 2 × 200 mm), 75 kg load capacity, full extension runner
- Usable area per drawer = 900 × 600 mm = 0.54 m²
- „Key Lock“ locking system with single-drawer blocking system, including two keys

Partition material

Product	Art. no.
Set for drawer cabinet	A 17.591.000

1 × FH 100 mm



1 × foam insert

2 × FH 100 mm



12 × lengthways partitioning
28 × horizontal partitioning

2 × FH 100 mm



16 × lengthways partitioning
36 × horizontal partitioning

1 × FH 200 mm



3 × lengthways partitioning
4 × horizontal partitioning

1 × FH 200 mm



without partition material



Rollboy

Height **992** × width **605** × depth **695** mm

Colour

RAL 7035

RAL 5012

Art. no.

A 81.572.000

Specifications

- High-quality steel plate construction
- Total load capacity 400 kg with an evenly distributed load
- 4 drawers (front heights 2 × 150 mm / 2 × 200 mm), 75 kg load capacity, full extension runner
- Usable area per drawer = 500 × 600 mm = 0.3 m²
- „Key Lock“ locking system with single-drawer blocking system, including two keys
- 1 raised edge with ribbed mat and push bar
- Set of castors in solid rubber consisting of 2 fixed and 2 swivel castors with locking brakes, ø 100 mm



Free software available



Overview with Thur Script

■ The free-to-download software

Thur Script offers a variety of labelling options, pictograms and a barcode generator (software download at www.thurmetall.com)

■ Simply insert printout labels

for straightforward, protected and clear labelling in the drawer handle rail

■ Flexible labelling options

for drawer partition material such as insert boxes, troughs as well as metal dividers and partitions

■ Multifunctional labels

The labels tailored to the software are available as A4 sheets of paper and can be used in a standard printer (see below)

Standard workbench

Height **840** × depth **700** mm

Colour	Width	Art. no.
RAL 7035	1500 mm	A 51.048.000
	2000 mm	A 51.050.000

Specifications

- Workbench leg assembly made from square tubular steel 50/50 mm. Can be retrofitted with height adjustment and mounting brackets for screwing to the floor.
- Workbench top: multiplex, 40 mm
- Total load capacity 450 kg (W = 1500 mm) and 290 kg (W = 2000 mm) with an evenly distributed load



Standard workbench 4 drawers

Height **840** × depth **700** mm

Colour		Width	Art. no.
RAL 7035	RAL 5012	1500 mm	A 81.573.000
		2000 mm	A 81.574.000



Partition material

Product	Art. no.
Set for standard workbench	A 17.592.000

2 × FH 150 mm



2 × lengthways partitioning
4 × horizontal partitioning

1 × FH 200 mm



1 × lengthways partitioning
2 × horizontal partitioning

1 × FH 200 mm



without partition
material

Specifications

- Workbench top: multiplex, 40 mm
- Total load capacity 600 kg (W = 1500 mm) and 360 kg (W = 2000 mm) with an evenly distributed load
- 4 drawers (front heights 2 × 150 mm / 2 × 200 mm), load capacity 75 kg, full extension 100 %
- Usable dimension per drawer: 500 × 600 mm = 0.30 m²
- „Key Lock“ locking system with single-drawer blocking system, including two keys

System workbench

Height **840** × width **1500** × depth **700** mm

Colour

RAL 7035

RAL 5012

Art. no.

A 85.202.514



Specifications

- Workbench frame made from high-quality sheet steel
- Capacity approx. 1000kg with an evenly distributed load
- Legs with height compensation
- Workbench top: multiplex, 40 mm
- 1 drawer (front height 1 × 150 mm), partially extendable to approx. 90%, load capacity 65 kg
- Usable dimension per drawer: 459 × 510 mm = 0.23 m²
- Drawer handle with large labelling area
- 1 door (front height 450 mm)
- Central lock including Huwil cylinder with two keys



System workbench

Height **840** × width **1500** × depth **700** mm

Colour

RAL 7035

RAL 5012

Art. no.

A 85.203.514

Specifications

- Workbench frame made from high-quality sheet steel
- Capacity approx. 1000kg with an evenly distributed load
- Legs with height compensation
- Workbench top: multiplex, 40 mm
- 3 drawers (front height 3 × 200 mm), partially extendable to approx. 90 %, load capacity 65 kg
- Usable dimension per drawer: 459 × 510 mm = 0.23 m²
- 1 door (front height 600 mm)
- 1 mezzanine floor, galvanised
- Drawer handle with large labelling area
- Central lock including Huwil cylinder with two keys



Partition material

Product

Art. no.

Set for a drawer

A 41.479.000

1 × FH 200mm



2 × lengthways partitioning
6 × horizontal partitioning

System workbench

Height **840** × width **2000** × depth **700** mm

Colour	Art.no.	
RAL 7035	RAL 5012	A 85.206.514



Specifications

- Workbench frame made from high-quality sheet steel
- Capacity approx. 1000 kg with an evenly distributed load
- Legs with height compensation
- Workbench top: multiplex, 40 mm
- 3 drawers (front height 3 × 200 mm), partially extendable to approx. 90%, load capacity 65 kg
- Usable dimension per drawer: 459 × 510 mm = 0.23 m²
- Drawer handle with large labelling area
- 1 door (front height 600 mm)
- 1 mezzanine floor, galvanised
- Central lock including Huwil cylinder with two keys

Partition material

Product	Art.no.
Set for a drawer	A 41.479.000

1 × FH 200 mm



2 × lengthways partitioning
6 × horizontal partitioning

System workbench

Height **840** × width **2000** × depth **700** mm

Colour	Art.no.	
RAL 7035	RAL 5012	A 85.207.514



Partition material

Product	Art.no.
Set for a drawer	A 41.479.000

1 × FH 200 mm



2 × lengthways partitioning
6 × horizontal partitioning

Specifications

- Workbench frame made from high-quality sheet steel
- Capacity approx. 1000 kg with an evenly distributed load
- Legs with height compensation
- Workbench top: multiplex, 40 mm
- 3 drawers (front height 3 × 200 mm), partially extendable to approx. 90%, load capacity 65 kg
- Usable dimension per drawer: 459 × 510 mm = 0.23 m²
- Drawer handle with large labelling area
- 2 doors (front height 600 mm)
- 2 mezzanine floors, galvanised
- Central lock including Huwil cylinder with two keys

System workbench mobile

NEW

Height **877** × width **1250** × depth **700** mm

Colour	Art. no.
RAL 7035	A 85.204.514
RAL 5012	

Specifications

- Workbench frame made from high-quality sheet steel
- Capacity 400 kg with an evenly distributed load
- Workbench top: multiplex, 40 mm
- 3 drawers (front height 3 × 200 mm), with pull-out stop, partially extendable to approx. 90%, load capacity 65 kg
- Usable dimension per drawer: 459 × 510 mm = 0.23 m²
- Drawer handle with large labelling area
- 1 door (front height 600 mm)
- 1 mezzanine floor, galvanised
- Central lock including Huwil cylinder with two keys
- Set of castors in solid rubber consisting of 2 fixed and 2 swivel castors with locking brakes, ø 100 mm
- 1 black plastic push handle



System workbench mobile

Height **877** × width **1250** × depth **700** mm

Colour	Art. no.
RAL 7035	A 85.205.514
RAL 5012	

NEW


Partition material

Product	Art. no.
Set for a drawer	A 41.479.000

1 × FH 200 mm


2 × lengthways partitioning
6 × horizontal partitioning

Specifications

- Workbench frame made from high-quality sheet steel
- Capacity 400 kg with an evenly distributed load
- Workbench top: multiplex, 40 mm
- 1 drawer (front height 1 × 150 mm), with pull-out stop, partially extendable to approx. 90%, load capacity 65 kg
- Usable dimension per drawer: 459 × 510 mm = 0.23 m²
- Drawer handle with large labelling area
- 1 door (front height 450 mm)
- Central lock including Huwil cylinder with two keys
- Set of castors in solid rubber consisting of 2 fixed and 2 swivel castors with locking brakes, ø 100 mm
- 1 black plastic push handle

Clothes lockers

Height 1800 × depth 500 mm

Colour	Compartments	Width	Art. no.
RAL 7035	2	600 mm	A 53.261.514
	3	900 mm	A+ 53.259.514
	4	1200 mm	A 53.260.514

Specifications per compartment

- High-quality steel plate construction
- Hinged doors mounted on the right with fulcrum pin
- Air vent at the top and bottom of the housing cover
- Key Lock locking system (locking system with padlock on request)
- Storage option according to DIN 4547-2011
- 1 hat rack
- 1 clothes rack with 3 hooks
- 1 towel holder



A 53.261.514



A 53.260.514



Versatile locking systems

Cylinder locks, numeric combination locks, coin deposit locks, locking systems for padlocks and master key systems are available.



A+ 53.259.514



Clothes locker with hinged doors and divider

Height 1950 × width 1000 × depth 500 mm

Colour	Art. no.
RAL 7035	A 53.079.514
RAL 5012	



Specifications

- High-quality steel plate construction
- Solid sheet hinged doors with rotary-type security lock, including two keys
- Housing load capacity 500 kg with an evenly distributed load
- 4 shelves (usable width 1 × 982 mm / 3 × 481 mm), height-adjustable, galvanised
- 1 coat rod with 3 plastic hooks
- Load capacity per shelf 60 kg
- Supplied fully assembled and ready to use



Also available with viewing window doors on request.

Art. no. 53.080.514

Hinged door cabinet

Height **1950** × width **1000** mm

Colour		Depth	Art. no.
RAL 7035	RAL 5012	300 mm	A 85.227.514
		400 mm	A 82.947.514
		500 mm	A 62.487.000

Specifications

- High-quality steel plate construction
- Solid sheet hinged doors with rotary-type security lock (including two keys)
- Housing load capacity 500 kg with an evenly distributed load
- 4 shelves, galvanised
- Load capacity per shelf 60 kg
- Supplied fully assembled and ready to use



Ecology

Environmental responsibility

■ Resource-conserving production

Made possible through the use of high-quality materials, the latest machine technology and environmentally compatible manufacturing processes

■ Steel as a green material

In addition to its high load bearing capacity, resistance to temperature and corrosion, it is the hygienic and environmentally friendly advantages of steel that make it so valuable. It can be reused as a 100 % recyclable raw material and reprocessed again to the highest level of quality

■ Solid wood panels

To ensure sustainability, we use wood harvested from **FSC** certified forests

■ Refurbishing / disposal

For furnishing with many years of service we offer our customers return, refurbishing or environmentally sound disposal on request and against payment



Certifications:
ISO 9001, 14001
and OHSAS 18001



Packing table

Model 010

Height **870** × width **1600** × depth **800** mm

Colour

RAL 7016

Art.no.

A 64.266.000

Specifications

- High-quality construction in steel profile
- Powder-coated surface, RAL 7016 anthracite grey
- Countertop 25 mm, plastic-coated, light grey
- Height of countertop 870 mm



Packing table

Model 020

Height **1885** × width **1600** × depth **840** mm

Colour

RAL 7016

Art.no.

A 64.291.503



Specifications

- High-quality construction in steel profile
- Powder-coated surface, RAL 7016 anthracite grey
- Countertop 25 mm, plastic-coated, light grey
- Height of countertop 870 mm
- Superstructure consisting of:
 - 1 storage shelf 1415 × 420 mm (W × D)
 - 1 storage shelf 1415 × 250 mm (W × D)
 - 5 bars, chrome-plated, for packing materials

Packing table

Model 030

Height **1885** × width **1600** × depth **840** mm

Colour

RAL 7016

Art. no.

A 64.292.503

Specifications

- High-quality construction in steel profile
- Powder-coated surface, RAL 7016 anthracite grey
- Countertop 25 mm, plastic-coated, pale grey
- Height of countertop 870 mm
- Superstructure consisting of:
 - 1 storage shelf 1415 × 420 mm (W × D)
 - 1 storage shelf 1415 × 250 mm (W × D)
 - 5 bars, chrome-plated, for packing materials
- 1 benchtop cutting unit (W = 1250 mm; cutting width 1000 mm)
- 1 horizontal steel bar for holding rolls of packing paper



Height adjustment for packing table

Colour

galvanised

Art. no.

A 64.152.000

Specifications

- High-quality construction in steel profile
- Galvanised surface
- 4-part
- For manual height adjustment up to 250 mm



Labelling system

Four steps to perfect labelling with **THURScript**

Using the advanced THURScript labelling system, all Thur Metall products and many partition materials can be simply and clearly labelled. The labelling software can be downloaded easily and free of charge from the Thur Metall website. The labels are specially designed to be used with the software and are available as A4 sheets. They can be used in all commercially available printers. As a result, the range of individual label designs is virtually unlimited.



Step 1

Free download:
www.thurmetall.com/thurscript.php



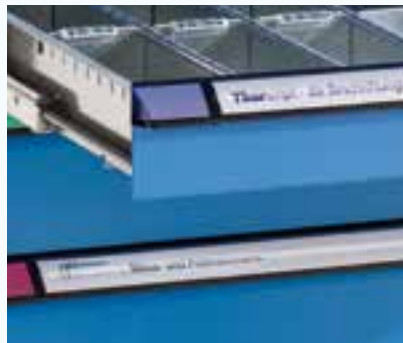
Step 2

Design: Create the label using the **THURScript** labelling software.



Step 3

Print: Print the labels on **THURScript** labels and detach them in the desired size at the perforated points.



Step 4

Slide in: Take the viewing window out of the handle on the drawer and simply slide the label in sideways.

Benefits

- Easy to create customised Thur-Metall labels
- With text, colours, images and barcode generation
- Data import via database connection possible
- High flexibility thanks to various label sizes and perforated A4 sheets
- Printable on any commercially available printer



Available label formats

Art.no.	Can be used for formats (H x W)		Suitable for
19.035.000	210 x 30 mm or	30 x 70 mm	Handle rail for the conventional TM drawer
90.929.000	210 x 36 mm or	30 x 105 mm	Handle rail for the TM tool trolley
18.784.000		22 x 70 mm	„Private Label“ handle (details on request)
18.786.000		12 x 47 mm	Insert boxes and inscription holders
18.787.000		12 x 27 mm	Insert boxes and inscription holders

Prices on request.

The use of high-quality materials, state-of-the-art machine technology and environmentally sustainable production processes, ongoing quality control and a highly motivated team of employees guarantee durability in timeless design at an impressive price/performance ratio.

▪ **Quality**

Thur Metall drawer cabinets made of high-quality sheet steel with matching workbenches are favourites in industry and business. In assembly halls and workshops, in research labs, museums and hospitals, in small-parts warehouses and showrooms: Thur Metall is a must wherever tools, warehouse goods and small parts are required and offers an optimised space-saving solution for easy access

▪ **5-year warranty**

You can rely on our quality products. That's why we offer our customers a 5-year warranty on the entire range of Thur Metall products. Workbench tops and electronic parts are covered by a warranty period of 1 year.

▪ **Certified production**

Manufacturing of Thur Metall products is based on the following standard principles:

ISO 9001:2008 Quality management,

ISO 14001:2004 Environment management system and
OHSAS 18001:2007 Occupational health and safety management system.

▪ **We guarantee high-quality surfaces**

using the latest powder coating technology for high abrasion resistance.

Only available from the specialist trade:

THURMETALL
Standardmässig individuell

Further attractive
products can be found on
www.thurmetall.com